



SMITH GROVE VOLUNTEER FIRE DEPT.

ADVANCE, NC

SO.145354 / Q112589

PUMPER
CYCLONE CHASSIS

2000 GALE QMAX-XS PUMP
1030 GALLON WATER TANK

HOSE LOAD:
500' OF 2.50" DJ
1500' OF 5.00" LDH
250' OF 2.50" DJ

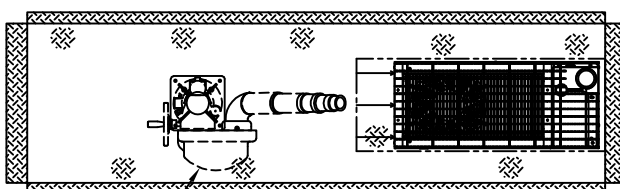
COMPT.	OPENING	INTERIOR DIMENSION			
		PUMP PANEL	FORWARD	REAR	
L1	40W	59H	16W	3H	UPPER
L2	38W	59H	40W	3H	LOWER
L3	54W	25H	39W	2H	LOWER
L4	54W	59H	56W	2H	LOWER
R1	40W	59H	42W	2H	UPPER
R2	38W	59H	40W	2H	UPPER
R3	54W	25H	56W	2H	UPPER
R4	54W	59H	56W	3H	LOWER
B1	36W	47H	38W	47H	27D

THIS DRAWING IS FOR REFERENCE PURPOSES. ALL DIMENSIONS ARE SUBJECT TO MINOR VARIATIONS DUE TO MANUFACTURING PROCESSES.

(FOR INTERNAL SALES PURPOSES ONLY)

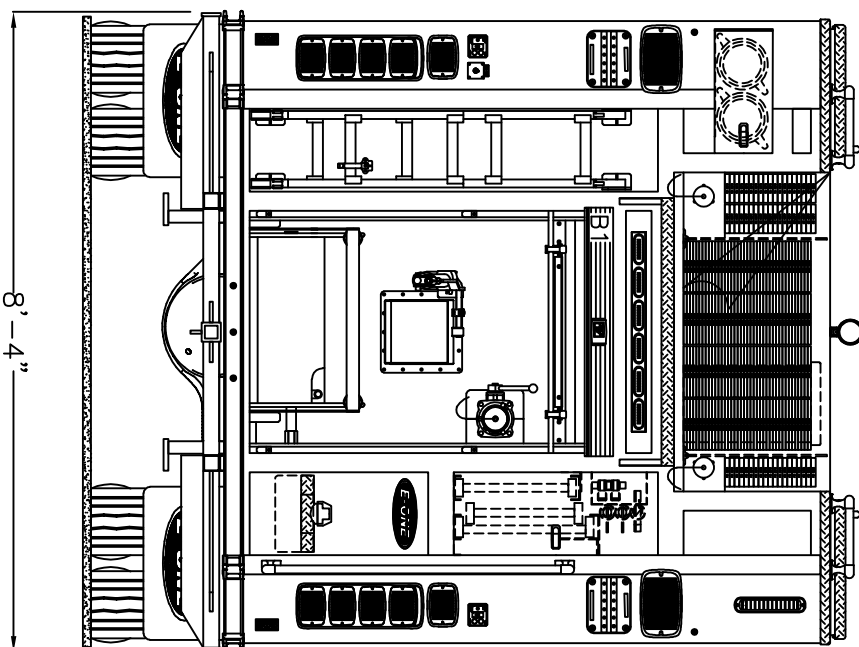
DEALER APPROVAL _____ DATE _____ CLASS IS _____

WITH REVISIONS

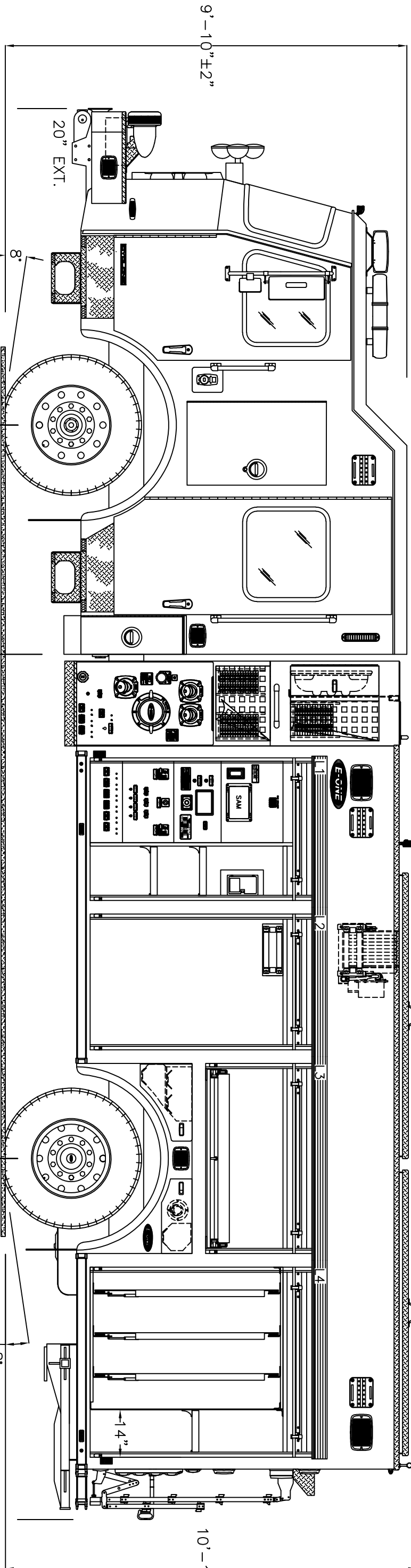


DEALER INSTALL AND SUPPLIED

HOSEBED HEIGHT:
(FOR REFERENCE ONLY)
TO TAILBOARD: 69"
TO GROUND: 93"



8'-4"

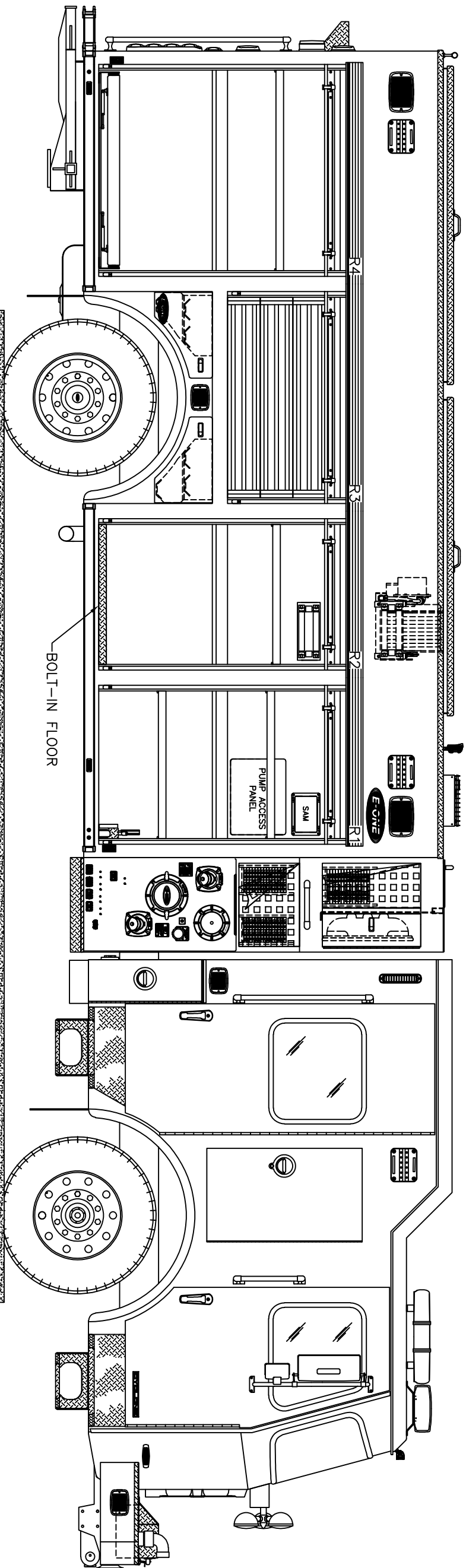
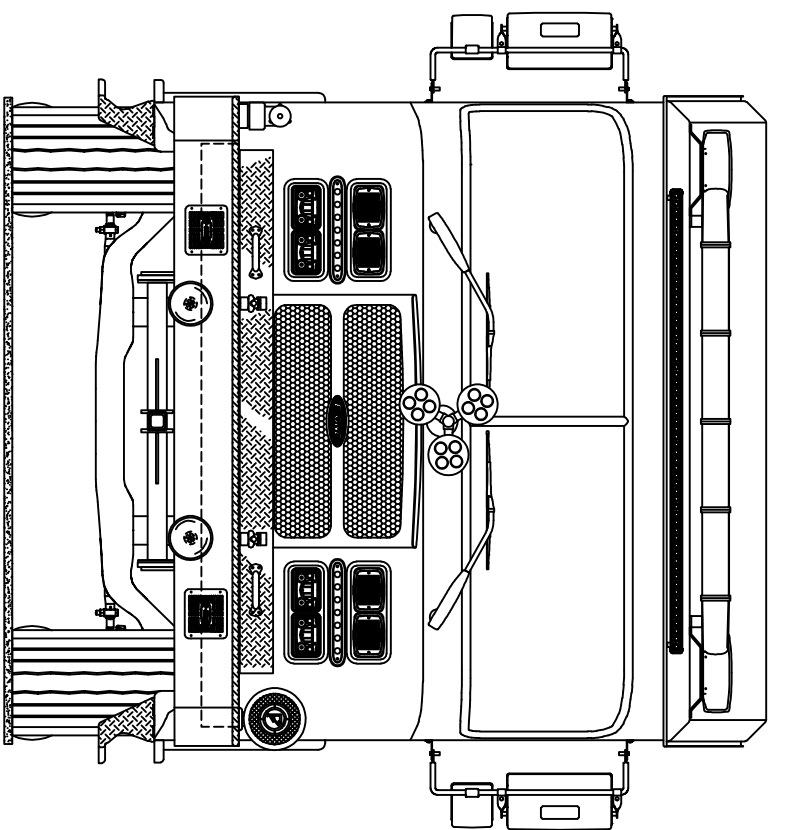


DATE	BY	DESCRIPTION
2022-MAY-31	JM	OVER RELEASE
DATE	DATE	APPROVED
SHEET 1 OF 2		



SMITH GROVE VOLUNTEER FIRE DEPT.
ADVANCE, NC
 SO.145354 / 0112589
PUMPER
CYCLONE CHASSIS

THIS DRAWING IS FOR REFERENCE PURPOSES. ALL DIMENSIONS ARE SUBJECT TO MINOR VARIATIONS DUE TO MANUFACTURING PROCESSES.
 (FOR INTERNAL SALES PURPOSES ONLY)
 DEALER APPROVAL _____ DATE _____ CHAS IS _____
 CUSTOMER APPROVAL _____ DATE _____ C/ WITH REVISIONS _____



DATE	2022-MAY-31	APPROVED	JMAY
DRAWN BY	LAJ	DESCRIPTION	
REV		APPROVAL REVISIONS	
SHEET	2	OF	2